

Submersible drainage pumps for hot clear water and drainage water. Spherical clearance 10 – 28 mm.

H 306, H 312, H 328 F

Application

HOMA H 300 are submersible drainage pumps for pumping clear water or drainage water with high temperatures. With the advantage of thick wall casting for dissipation of heat and viton seals, they are the ideal solution to pump condensate, clear water or drainage water up to 90°C. The models H 306 and H 312 are used for pumping clear water or drainage water up to 10 mm spherical clearance, model H 328 F up to 28 mm spherical clearance. They are suitable for laundries, car washes, food industries and many other applications.

DIN EN 12050-2: Conformity and design approved and controlled by LGA, certificate No. 0220119.

Installation: Transportable or permanent. Models with float switch control for automatic pump operation, depending on medium level in the sump.

Pumped medium: Condensate, clear water or drainage water.

Max. medium temperature: 90°C

Operation: Intermittent.

Design

Fully submersible, compact integrated motor-pump unit consisting of:

Pump: Single stage centrifugal pump with horizontal discharge BSP 1 1/2" F.

Impeller: H 306, H 312: open multi-channel impeller, spherical clearance 10 mm. H 328 F: Vortex impeller, spherical clearance 28 mm.

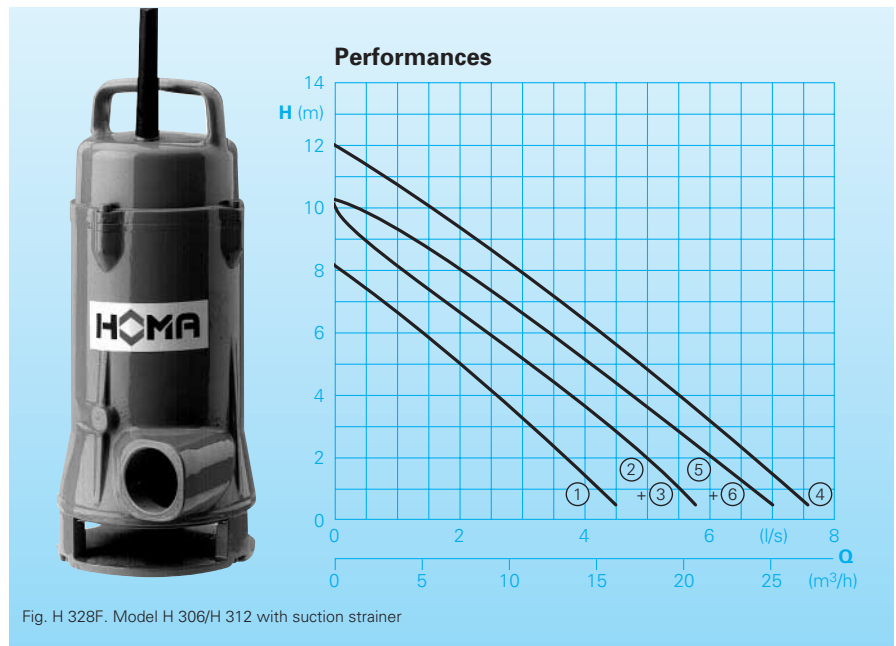
Motor: Fully submersible, pressure tight electric motor, oil filled. Insulation class F. Degree of protection IP 68.

Cable: BI HF-J 4 x 1,5

Model WA: BI HF-J 5 x 1,5.

Shaft/Bearing: Large diameter stainless steel rotor shaft, pre-lubricated bearings.

Seals: Triple Viton lip seal combination.



Technical Data

Curve No.	Pump type	Motor-input P ₁ (kW)	Motor-output P ₂ (kW)	Voltage 50 Hz (V)	Speed (rpm)	Nominal current (A)	Weight (kg)
①	H 306 W(A)	0,65	0,45	230-240/1Ph	2900	4,0	18
②	H 306 D(A)	0,65	0,5	400-415/3Ph	2900	1,2	18
③	H 312 W(A)	0,85	0,6	230-240/1Ph	2900	5,5	20
④	H 312 D(A)	1,1	0,9	400-415/3Ph	2900	2,4	20
⑤	H 328F W(A)	1,1	0,9	230-240/1Ph	2900	6,0	20
⑥	H 328F D(A)	1,1	0,9	400-415/3Ph	2900	2,2	20

Discharge: BSP 1 1/2" F

Other voltages are available upon request

Model A: With automatic level control

HOMA-Nivomatik

Materials:

Suction sieve, suction cover, motor bearing housing, motor housing, motor housing cover, impeller	Cast iron GG 25
Rotor shaft, screws	Stainless steel
Seal kit	Viton
Cable	Silicon

Equipment supplied

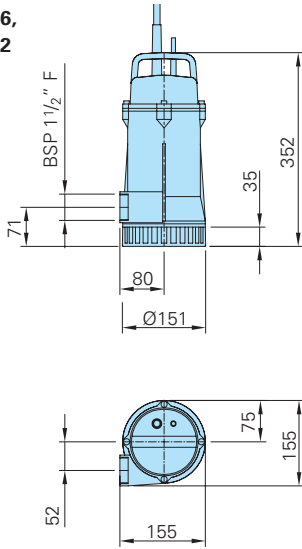
Model W (230-240 V/1 Ph): Control box fitted with overload protection, on-off switch and 10 m of cable.

Model D (400-415 V/3Ph): Control box fitted with overload protection, on-off switch and 10 m of cable.

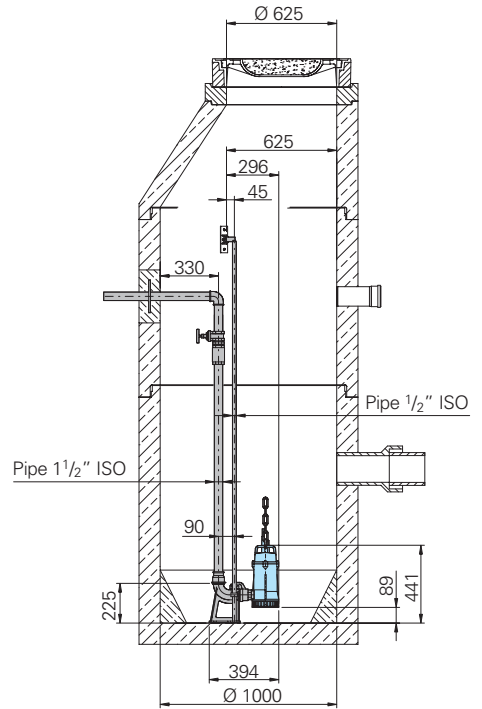
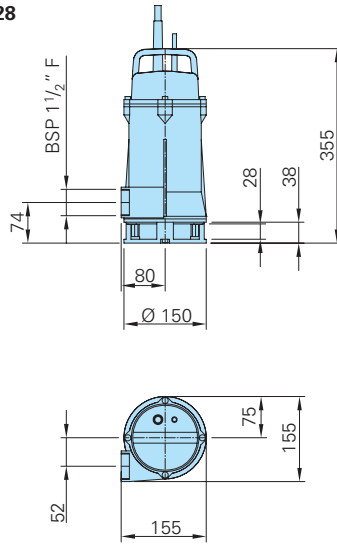
Model A: With additional automatic level control, manual-auto switch and 5 m of cable.

Dimensions

H 306,
H 312



H 328

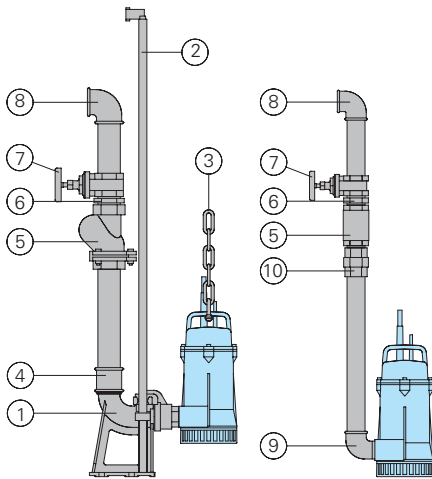


Wet well installation with auto-coupling system.

Permanent installation utilising a submerged auto-coupling guide rail system for automatic connection and disconnection of the pump from the pipework from outside the sump. Applicable for single or multi pump stations. Advantages: Little space requirement, easy pump service and maintenance.

all dimensions in mm.

Accessories



Part Description	Dimension	Part No.
① Auto-coupling system type KK 50/R 1 1/2" with:		8604000
- Cast iron auto-coupling with flange and thread	DN 50 BSP 1 1/2" F	
- Cast iron flanged pump	BSP 1 1/2" M	
- Cast iron upper slide rail bracket	1 1/2"	
② Steel galvanized guide 1 1/2" rail, pair, per m		2190085

Part Description	Dimension	Part No.
③ Steel galvanized lifting chain	5 mm dia.	2800350
Steel galvanized shackle	Size 1	2801380
④ Galvanized double socket	BSP 2" F	2109102
	BSP 2" Fx	2102210
	BSP 1 1/2" F	
⑤ Cast iron swing check valve	BSP 1 1/2" F	2212902
	BSP 2" F	2212903
⑥ Galvanized double nipple	BSP 1 1/2" M	2009020
	BSP 2" M	2009018
⑦ Bronze gate valve	BSP 1 1/2" F	2216015
	BSP 2" F	2216020
⑧ 90° galvanized elbow	BSP 1 1/2" F	2113605
	BSP 2" F	2113606
T-piece for twin pump arrangement	BSP 1 1/2" F	2114302
	BSP 2" F	2114306
⑨ 90° galvanized elbow	BSP 1 1/2" F/M	2111505
	BSP 2" F/M	2111506
⑩ Galvanized pipe union	BSP 1 1/2" F/M	2114305
○ Brass STA hose coupling	BSP 1 1/2" M	2001513
STORZ-fixed coupling	C-BSP 1 1/2" M	2010003
○ PVC-hose, per m	1 1/2"	2621500
Reinforced hose, per m	50 mm dia.	2632050
STORZ-hose coupling with spigot	C-38 dia.	2013002
	C-52 dia.	2013003
Hose bands	1 1/2"	2304854
	2"	2306009
Synthetic pressure hose with rubber lining	length 10 m	2611310
	length 15 m	2611315
and couplings,	length 20 m	2611320
C-52 mm dia.	length 30 m	2611330

Part Description	Dimension	Part No.
○ HOMA-Nivomatik floatswitch level control conversion kit		
- for 220-240V/1Ph AZW 10/10	length 10 m	1435105
- for 380-415 V/3Ph AZD 10/10	length 10 m	1914452
○ Homa 2 poles earth circuit breaker Fi 16/0,03 A		1561160
○ Alarm device AL1 Mains-operated with connector for battery 9 V (see below) for mains-independent operation integrated buzzer.		1586010
Mains connection 220-240 V/1Ph		
Battery for mains-independent operation		1952209
Floatswitch MB, mercury free, on or off, with integr. counter weight		
Cable length	6 m	1465706
	10 m	1465710
○ Control panel for single or twin pump station for automatic operation		On request

HOMA
P U M P T E C H N O L O G Y

HOMA Pumpenfabrik GmbH
P.O. Box 22 63, D-53814 Neunk.-Seelscheid
Tel. ++49(0)22 47/702-0, Fax ++49(0)22 47/702-44
e-mail: info@homa-pumpen.de
www.homapumps.com