

Stainless steel submersible drainage pumps for chemically aggressive liquids. Spherical clearance 50 – 70 mm.

CTP 50, CTP 53, CTP 70

Application

HOMA CTP stainless steel submersible drainage pumps are suitable for pumping corrosive, abrasive or chemically aggressive liquids, waste water or sewage and chemicals containing soft solids of 50 - 70 mm diameter. They are used in various domestic, industrial or municipal applications.

DIN EN 12050-2: Conformity and design approved and controlled by LGA, certificate No. 0220119.

Installation: Transportable or permanent.

Pumped liquid: Drainage water or sewage containing soft solids and chemically aggressive liquids.
Max. medium temperature: 40°C, short term up to 60°C.

Operation: Permanent operation (S1) with completely submerged motor.

Design

Fully submersible, compact integrated motor-pump unit consisting of:

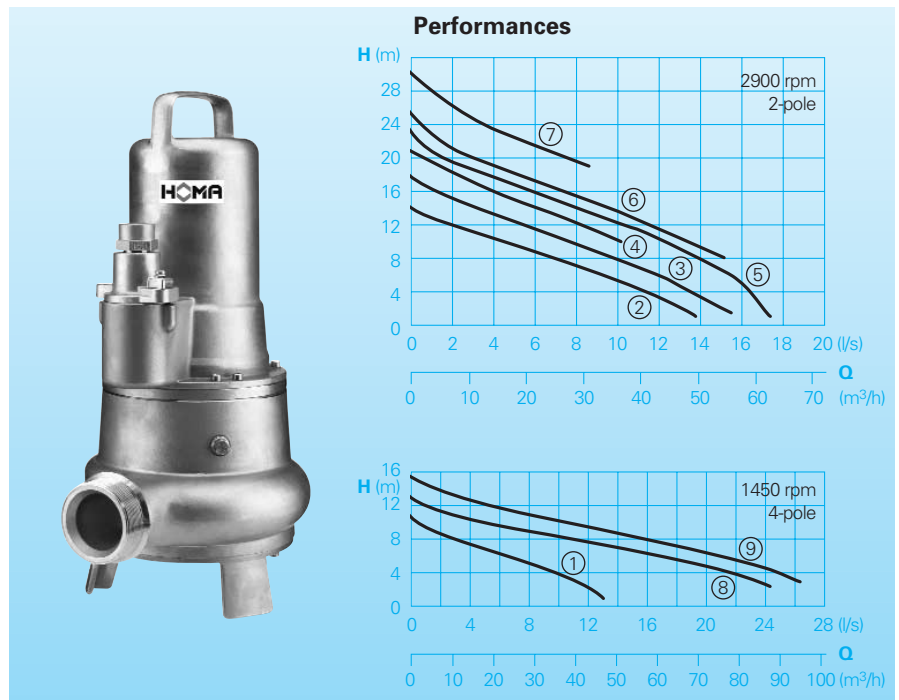
Pump: Single stage centrifugal pump with horizontal discharge.

Impeller: Closed single channel impeller for liquids containing impurities and sludge with solid particles. Spherical clearance 50 and 70 mm.

Motor: Fully submersible, pressure tight electric motor. Insulation class F. Degree of protection IP 68. Thermal sensor embedded in the winding.
Cable: H07 RN-F Plus 6G1,5 with cable protective hose and longitudinally tight cable trumpet. Explosion proof motors according to ATEX Ex II G EEX d II BT4.

Shaft/Bearing: Large diameter stainless steel rotor shaft, pre-lubricated bearings.

Seals: Combination of two mechanical seals (silicon-carbide/ silicon-carbide) in separate oil chamber. Oil inspection from outside.



Technical Data

| Curve No. | Pump type | Motor input P ₁ (kW) | Motor output P ₂ (kW) | Speed (rpm) | Nominal current (A) | Spherical clearance (mm) | Dis-charge | Weight (kg) |
|-----------|----------------------------|---------------------------------|----------------------------------|-------------|---------------------|--------------------------|--|-------------|
| ① | CTP 50 (53) M 13/4 D (Ex) | 1,3 | 1,0 | 1450 | 2,6 | 50 | BSP2 ¹ / ₂ "(3") M | 39 |
| ② | CTP 50 (53) M 19/2 D (Ex) | 1,9 | 1,5 | 2800 | 4,0 | 50 | BSP2 ¹ / ₂ "(3") M | 39 |
| ③ | CTP 50 (53) M 23/2 D (Ex) | 2,3 | 1,8 | 2800 | 4,4 | 50 | BSP2 ¹ / ₂ "(3") M | 39 |
| ④ | CTP 50 (53) M 24/2 D (Ex) | 2,4 | 1,9 | 2800 | 4,6 | 50 | BSP2 ¹ / ₂ "(3") M | 39 |
| ⑤ | CTP 50 (53) M 34/2 D (Ex) | 3,4 | 2,8 | 2800 | 6,9 | 50 | BSP2 ¹ / ₂ "(3") M | 51 |
| ⑥ | CTP 50 (53) M 35/2 D (Ex) | 3,5 | 2,8 | 2800 | 7,1 | 50 | BSP2 ¹ / ₂ "(3") M | 51 |
| ⑦ | CTP 50 (53) M 35/2 HD (Ex) | 3,5 | 2,8 | 2800 | 7,1 | 50 | BSP2 ¹ / ₂ "(3") M | 51 |
| ⑧ | CTP 70 M 26/4 D (Ex) | 2,5 | 2,0 | 1450 | 5,4 | 70 | DN 80 | 65 |
| ⑨ | CTP 70 M 31/4 D (Ex) | 3,2 | 2,5 | 1450 | 6,1 | 70 | DN 80 | 65 |

Voltage: 400 V / 3 ph

Model Ex: explosion proof

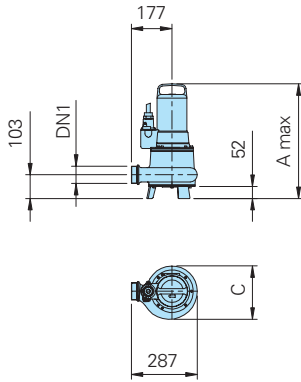
| Materials: | |
|---------------------------------------|--------------------------|
| Pump housing, impeller, motor housing | Stainless steel 1.4436 |
| Rotor shaft | Stainless steel 1.4571 |
| Mechanical connection parts | Stainless steel 1.4571 |
| O-Rings | FPM (Viton) |
| Mechanical seals | SiC / SiC, FPM (Q101VGG) |
| Cable protective hose | Polyolefine |

Equipment supplied

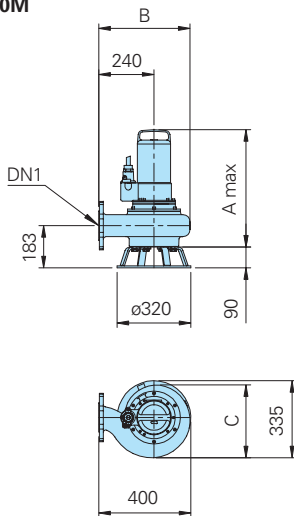
Pumps with base stand, 10 m of cable, 5 m cable protective hose.

Dimensions

CTP50M CTP53M

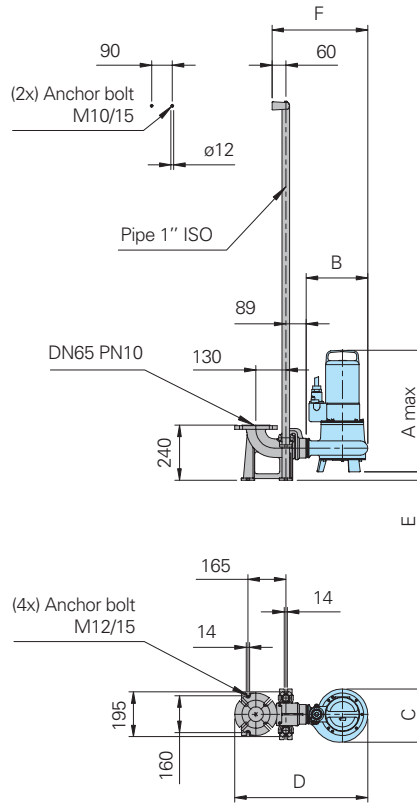


CTP70M

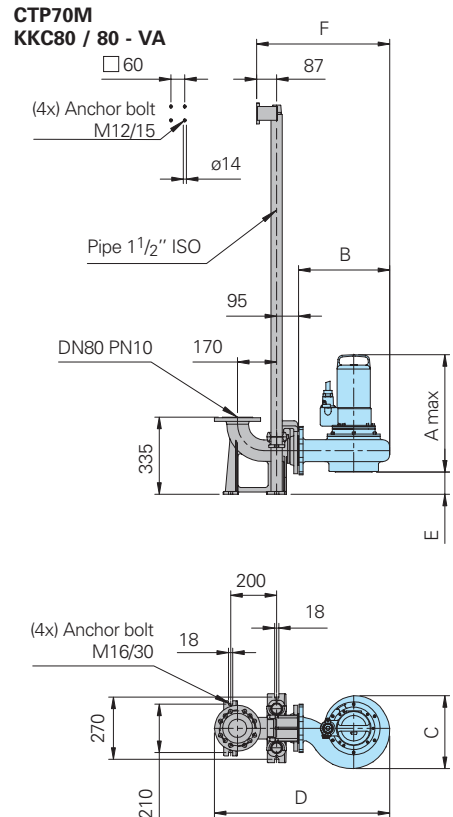


all dimensions in mm

CTP50M KKC65 / BSP 2 1/2" - VA

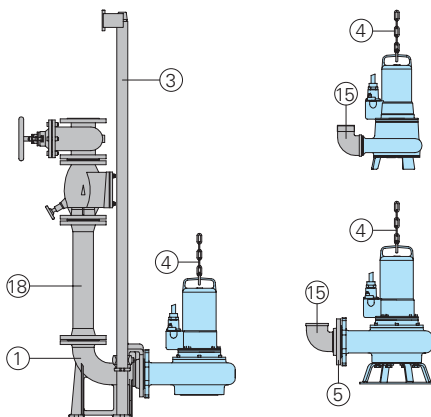


CTP53M KKC80 / BSP 3" - VA



| Pump type | DN1 | A max | B | C | D | E | F |
|---------------------------|--------------|-------|-----|-----|-----|----|-----|
| CTP 50 M 13/4 D (EX) | BSP 2 1/2" M | 498 | 267 | 232 | 579 | 37 | 416 |
| CTP 50 M (19-24)/2 D (EX) | BSP 2 1/2" M | 498 | 267 | 232 | 579 | 37 | 416 |
| CTP 50 M (34-35)/2 D (EX) | BSP 2 1/2" M | 529 | 267 | 232 | 579 | 37 | 416 |
| CTP 50 M 35/2 HD (EX) | BSP 2 1/2" M | 529 | 267 | 232 | 579 | 37 | 416 |
| CTP 53 M 13/4 D (EX) | BSP 3" M | 498 | 291 | 232 | 656 | 87 | 473 |
| CTP 53 M (19-24)/2 D (EX) | BSP 3" M | 498 | 291 | 232 | 656 | 87 | 473 |
| CTP 53 M (34-35)/2 D (EX) | BSP 3" M | 529 | 291 | 232 | 656 | 87 | 473 |
| CTP 53 M 35/2 HD (EX) | BSP 3" M | 529 | 291 | 232 | 656 | 87 | 473 |
| CTP 70 M (26-31)/4 D (EX) | DN80 PN10 | 511 | 397 | 317 | 762 | 97 | 579 |

Accessories



| Part Description | Dimension | Part No. |
|--|-----------------------|----------|
| ① Auto-coupling system from stainless steel 1.4436, consisting of auto coupling with flange, flange pump coupling and upper slide rail bracket | | |
| - Type KKC 65/R2 1/2" | DN 65/BSP2 1/2" | 8604017 |
| - Type KKC 80/R3" | DN 80/BSP3" | 8604037 |
| - Type KKC 80/80 | DN 80 | 8604027 |
| ③ Guide rails, stainless steel 1.4571, dia. 1" for KKC65 pair, per m | dia. 1" for KKC65 | 2190252 |
| | dia. 1 1/2" for KKC80 | 2190254 |
| ④ Lifting chain, stainless steel 1.4401, 5 mm dia. per m | 5 mm dia. | 2800351 |
| | 8 mm dia. | 2800382 |
| Shackle, for chain stainless steel 1.4401 | 5 mm dia. | 2801390 |
| | 8 mm dia. | 2801390 |

| Part Description | Dimension | Part No. |
|--|-------------------|----------------------|
| ⑤ Threaded flange, stainless steel 1.4571 | DN 65/BSP2 1/2" F | 2215115 |
| | DN 80/BSP3" F | 2215120 |
| ⑬ Elbow 90°, stainless steel 1.4401 | BSP2 1/2" F/M | 2111826 |
| | BSP3" F/M | 2111827 |
| ⑭ Stainless steel or plastic discharge pipe and fittings | | On request |
| ○ Pump controls and control panels for permanent or transportable installation, level controllers and monitoring devices | | see HOMA-accessories |

HOMA
P U M P T E C H N O L O G Y

HOMA Pumpenfabrik GmbH
P.O. Box 22 63, D-53814 Neunk.-Seelscheid
Tel. +49(0)22 47/702-0, Fax +49(0)22 47/702-44
e-mail: info@homa-pumpen.de
www.homapumps.com